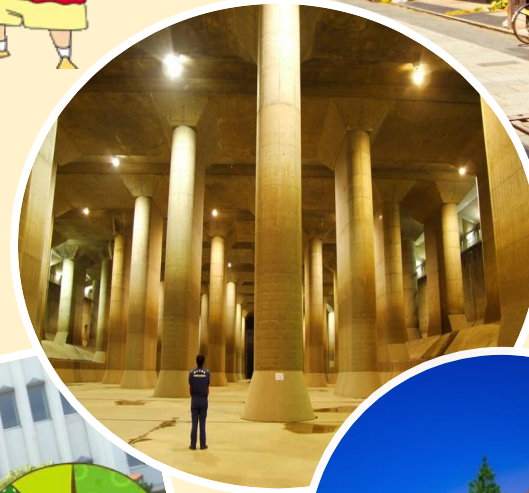


# Saitama Educational Inbound Handbook



## 1: Overview of Saitama

P3 : Basic information about Saitama

P4 : Saitama Educational Inbound

## 2: Saitama sightseeing spots

P5: Sightseeing spots in Saitama

P6-9: Central area(Saitama, Kawaguchi city etc.)

P10-11:East area (Kasukabe city etc.)

P12-13: North area(Gyoda, Fukaya city etc.)

P14-20: West area

(Kawagoe, Tokorozawa, Hannō city etc.)

P21-23: Chichibu area (Chichibu, Nagatoro city etc.)

## 3: Cultural exchange in school

P24: Cultural exchange in school

P25: Welcome ceremony

P26: Cultural experience

P27: Cooking and school lunch

P28: Examples of the experience programs

## 4: Homestay experience overview

P30: The flow of the days during homestay

P31: Homestay experience

P32-33 : Homestay experience

## 5: Reference Materials

<Accommodations by area>

P35-36 : North area, hotel examples

P37-38 : Central, East area, hotel examples

P39-40 : West area, hotel examples

P41-44 : Chichibu area, hotel examples

<Factory Tour>

The list of factories

P46 : Technologies

P47 : Food

P48 : Cosmetics, Traditional arts

<Kanto area recommended route>

P50: Including Nagano, spring and autumn ver.

P51: Including Nagano, winter ver.

P52: Including Gunma, spring and autumn ver.

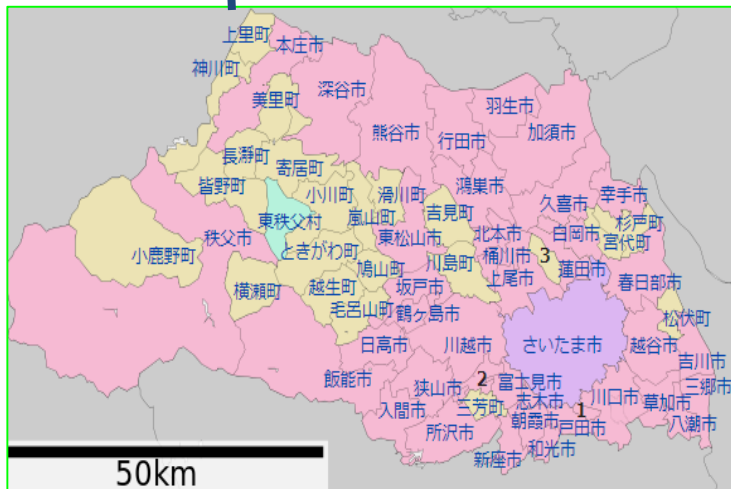
P53: Including Gunma, winter ver.

P54: Including Chiba, spring and autumn ver.

P55: Including Chiba, winter ver.



# Overview of Saitama -basic information



- Population : 7.3 million (The 5th in Japan)  
\*as of Oct-1, 2020
- Size : about 3,797km<sup>2</sup>
- Prefectural capital : Saitama city
- The number of city, town and villages : 63 (The 3rd in Japan)
- Agricultural products : Leek, Spinach, broccoli

## Access

### ■By bus

- Haneda airport to Omiya: about 60mins
- Narita airport to Omiya: about 90mins
- Minakami to Chichibu: about 90mins
- Nagano to Chichibu: about 120mins
- Omiya to Disney land: about 70mins
- Kawagoe to Fujikawaguchiko: about 110mins

### ■By train

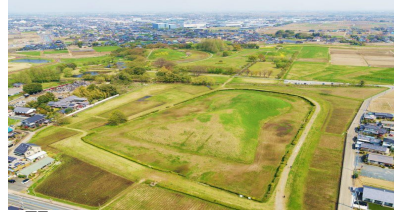
- Shinjuku to Omiya: about 30mins
- Shinjuku to Kawagoe: about 35mins
- Ikebukuro to Kawagoe: about 30mins
- Ikebukuro to Omiya: about 25mins

# Statistics of Saitama educational inbound

Year	Number of schools participated	Number of students
2013	15	634
2014	16	638
2015	19	822
2016	29	1126
2017	28	1082
2018	17	499
2019	37	968

# Sightseeing spots in Saitama

③ Museum of the Sakitama ancient burial mounds(refer to p.12)



② Metropolitan Area Outer Underground Discharge Channel(refer to p.10)



⑥ Chichibu Homestay(refer to p.26)



⑤ Moomin valley park(refer to p.17)



④ Kawagoe scenery of warehouse(refer to p.14)



① The railway museum (refer to p.6)



# Central area(Saitama, Kawaguchi city, etc.)

## ①The railway museum (Saitama city)

Education

Sightseeing



In this railway museum, you can explore the history of Japanese railways from SL to Shinkansen with the exhibitions of various car designs. You can also experience the driving simulations and enjoy riding mini-trains, etc. As a privately owned museum, it's the biggest in Japan.

# Central area(Saitama, Kawaguchi city etc.)

## ②Omiya Bonsai Art Museum(Saitama city)

Education



Omiya Bonsai art museum is **the first public bonsai museum in the world**. The museum collects and archive various documents and materials that relate to culture and history of bonsai and it continues to research bonsai.

In the bonsai garden, you can see the exhibitions of 40 to 50 bonsai and in the collection gallery, as an introduction to bonsai culture, you can see the monthly exhibitions of “Bonki(pots/vessels of bonsai)”, “Suiseki(small beautiful rocks)”, paintings and historical/folklore documents.

## ③Wakuwaku factory Glicopia EAST(Kitamoto city)

Education



Glico's sweets factory, started full operation in 2014.

It's a museum where you can learn about Glico's history and about confection through not only Pocky & Pretz's exhibitions and videos but also through factory tour and workshops(reservation-only)

# Central area(Saitama, Kawaguchi city etc.)

## ④Saitama Prefecture Center for Disaster Training (Kounosu city)

Education



This facility was established to build a resilient community for the natural disasters. You can have fun learning and experiencing the countermeasures for the times of natural disasters such as earthquakes and storms.

### 【Earthquake simulation】

You can learn how to act for the earthquakes through experiencing the real shakes.



### 【Storm simulation】

You can actually feel and learn the force of the wind at the maximum wind speed; 30m/s.



### 【Extinguishing fire】

You can learn how to use extinguisher and the effective way to put out the fire in the early stage.





# Central area(Saitama, Kawaguchi city etc.)

## ⑤ Saitama Prefectural Museum of History and Folklore(Saitama city)

Education



The museum covers the history, folklore and arts and you can learn about the living and culture of Saitama. The workshop of making “Magatama” is popular(¥250/person).

## ⑥ Skip City Sai-no-kuni visual plaza(Kawaguchi city)

Education



You can learn about the principle, the history and the process of making films through hands-on exhibitions.

- Exhibitions of storyboards and properties of famous films
- Experience of filming, post-recording and sound effects

# East area (Kasukabe city etc.)

## ① The Metropolitan Area Outer Underground Discharge Channel (Kasukabe city)

Education

Sightseeing



This is a 6.3 km underground discharge channel built at about 50m underground in the east Saitama prefecture.

This will store the water in the days of heavy rain and adjust the water that goes to the city area. You can join the tour to learn the role and the function of this facility. You can see various facilities such as surging tank.



# East area (Kasukabe city etc.)

## ② Center for Environmental Science(Kazo city)

Education



A core environmental science facility that holds learning facility and the laboratory.  
The lab studies broad area from familiar environment to the global environment and works for international contribution.



# North area(Gyoda, Fukaya city etc.)

## ① Museum of the Sakitama ancient burial mounds(Gyoda city)

Education



The museum preserves “Saitama ancient tomb” which was built later 5th century to the early 7th century and shows precious cultural assets including the national treasure, the excavated articles from Musashi Saitama Inari mountain mounds. In the park, you can hike up the mounds.

# North area(Gyoda, Fukaya city etc.)

## ② Eiichi Shibusawa Memorial hall(Fukaya city)

Education

You can get a lecture from the android of Eiichi Shibusawa.



The facility for TV series which covered Eiichi will be opened in Feb 2021.



Eiichi is in the limelight with 2021 TV series “Seiten wo tsuke” as a main character and also as the face of new ¥10,000 paper bill. You can learn about him at Fukaya, his birthplace.

\*He is said to be a founder of about 500 companies and called as “the father of Japanese economy”.

# West area(Kawagoe, Tokorozawa, Hannō city etc.)

## ① Small Edo, Kawagoe

-bell tower and warehouse townscape(Kawagoe city)

Sightseeing



“Kura(warehouse)-zukuri”, the nostalgic house style was developed through Edo period as fireproof building.

It still has the atmosphere of Edo period which you cannot see in Tokyo. In 2007, it was selected as one of the “100 Japanese beautiful historical features”

Kawagoe is a very popular sightseeing spot, known as “small Edo, Kawagoe”. It flourished as castle town and even today, you can enjoy the ancient townscape by walking around this area.



# West area(Kawagoe, Tokorozawa, Hannō city etc.)

## ② Small Edo, Kawagoe

Sweet street and Kawagoe festival hall(Kawagoe city)

Sightseeing



The street with many nostalgic “dagashi(cheap snacks)” shops. In the early Showa period(1926-), there were more than 70 snack shops which produce, distribute and sell various sweets and snacks.

Today, about 20 shops sell mint and “Kintaro” candies and other Dagashi. People with any age can enjoy the nostalgic atmosphere.

In the hall, you can find two parade floats and documents exhibited and experience the powerful atmosphere of Kawagoe festival. In the exhibition hall, you can also listen to the “Ohayashi(festival music)” for certain days (about 20mins).



# West area(Kawagoe, Tokorozawa, Hannō city etc.)

## ③ Small Edo, Kawagoe

Hikawa shrine and Kawagoe castle honmaru palace(Kawagoe city)

Sightseeing



The shrine is said to be built about 1,500 years ago and respected as the guardians of Kawagoe by the successive owners of Kawagoe castle. There are so many high spots such as 15m-tall Torii gate and the Edo style carvings(Important cultural property of Saitama)in the main player hall.

Built by Naritsune Matsudaira in 1848. It was an important north-defense of Edo in the edo period. The owners of the castle were senior statesman for generations.

You can still see the room of politics, large Tatami hall and gorgeous entrance with “Karahafu”style roof.





# West area(Kawagoe, Tokorozawa, Hannō city etc.)

## ④ Moomin Valley Park (Hannō city)

Sightseeing



Moomin family and their friends and the meeting of new discovery

Moomin valley park was opened in March 2019. You can re-experience the story of Moomin in 4 areas of this park. Why don't you see the charms of the Moomin stories and the philosophy of Tove Jansson, the author?



# West area(Kawagoe, Tokorozawa, Hannō city etc.)

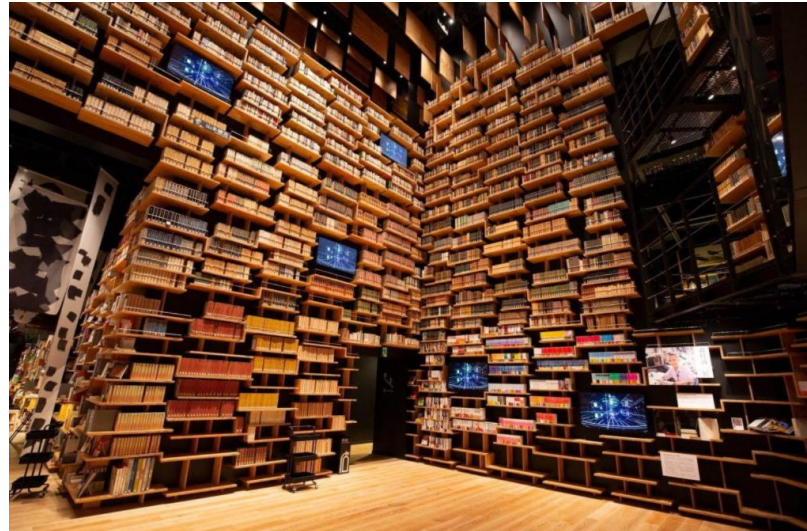
## ⑤ ☆NEW☆ Tokorozawa Sakura Town (Tokorozawa city)

Education

Sightseeing



In the facility, you can find Kadokawa Musashino museum which was designed by Kengo Kuma, who is a famous architect also designed new national stadium. The outer structure is 20,000 pieces of granite from China, hand-quarried and joined. You can enjoy the difference in the look from the different angles. It's five-stories with museum and anime-specialized museums, etc.



# West area(Kawagoe, Tokorozawa, Hannō city etc.)

## ⑥ Saitama museum of rivers (Osato-gun Yorii city)

Education

Sightseeing



The museum was established in 1997 with interactive exhibitions with a central theme as Arakawa river, the water and people's living. You can learn about Arakawa river's history, folklore and nature through exhibitions.

The great water wheel which is the symbol of this museum is made of Nishikawa timber(Hinoki, the Japanese cypress tree from Saitama) and the biggest one in Japan.

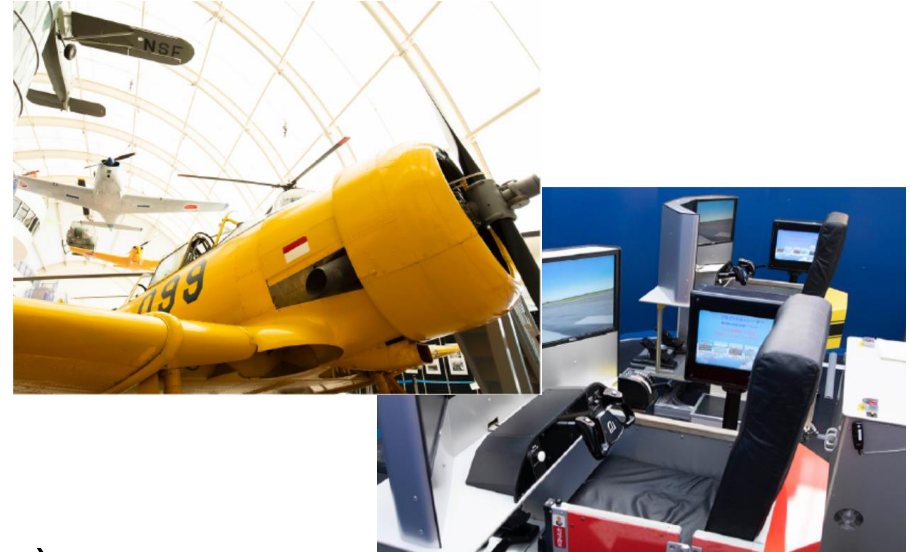
# West area(Kawagoe, Tokorozawa, Hannō city etc.)

## ⑦ Tokorozawa Aviation Museum(Tokorozawa city)

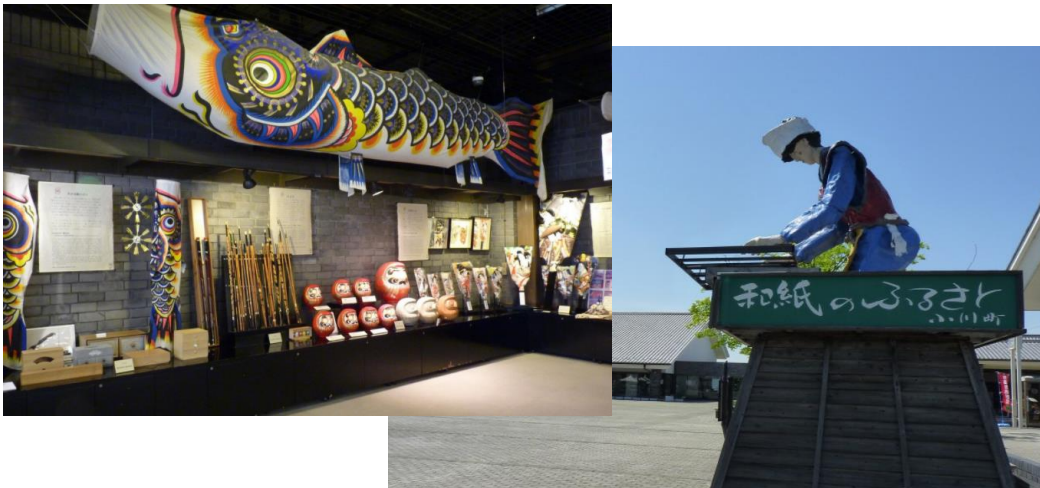
Education

Sightseeing

The museum was established at the site which used to be the first airport in Japan, “Tokorozawa airport”. You can see the replica of made-in Japan airplane from the early days and learn about the history of airplanes in Japan.



## ⑧ Saitama Craft Center (Ogawa city)



You can see all 30 designated traditional art crafts from 20 regions of Saitama. Saitama is known for many traditional Japanese crafts.

# Chichibu area (Chichibu, Nagatoro city etc.)

## ① Nagatoro valley

Rafting and the scenic layered rocks

Sightseeing



You can enjoy rafting with the traditional-style boat while seeing the beautiful scenic layered rocks(nationally designated natural monument) and canyon. **You can enjoy rafting throughout four seasons; shiba-sakura in the spring, cool breeze in the summer, colored leaves in the autumn, Kotatsu(heating system)-equipped boat in the winter.**

# Chichibu area (Chichibu, Nagatoro city etc.)

Sightseeing

## ② Hitsujiyama Park(Chichibu city)



In this park, you can enjoy 9 kinds of shiba-sakura from late April to early May.

You can enjoy the beautiful scenery of flowers and Bukohsan mountain, the symbol of Chichibu in the background.

# Chichibu area (Chichibu, Nagatoro city etc.)

Sightseeing

## ③ Icicle(Ogano and Yokose town)



You can enjoy the icicle from Jan. to Feb. every year.

At night, the area will be lit up so you can enjoy the fantastic scenery.

\*Depending on the year and weather, the length of icicle varies.

# Cultural exchange in school

## An example of cultural exchange program:

10:00	Arrival to the school
10:15-10:45	Welcome ceremony(greeting from headmaster, exchange of souvenirs etc.)
10:55-12:45	Classes ( English, calligraphy, music, Q&A sessions etc.)
12:50-13:20	School lunch(Bento)
13:25-14:15	Club activities(Judo, Tea ceremony, Kendo etc.)
14:30	Photo taking and send-off
14:45	Leave the school





# A look of cultural exchange in school -Welcome ceremony



Introduction of school



Exchange of souvenirs



Welcome

All starts with the welcome ceremony and this is the first time when each school meets face to face. After the greeting from the headmaster and the student representative, each school will show a performance and exchange the souvenirs etc. to promote cultural exchanges.

# A look of cultural exchange in school -Experience Japanese culture



Experiencing Japanese culture is the most popular program. Through the experience, the students will learn about the traditions and games from the old times.

The students of the host school will lead the program, teach the hosted students and sometimes been taught by them, enjoy the program together.



# A look of cultural exchange in school -Cooking and school lunch



One of the class experience includes cooking class. The students can learn about Japanese food culture. they will learn the basic of Japanese cuisine through actual cooking process.

Also, having lunch together will deepen the relationships of the students and help them overcome the language barrier.

# A look of cultural exchange in school -An example of the program

	Activity type	Details	
Content	Study	Class experience, School introduction by students in English, Chinese class by the guest students	
	Culture	<p>【Experience】 Calligraphy, Tea ceremony, Japanese drums, Karuta card game, Kendama, pottery, animation, Bean-throwing, origami, making tin badges, Japanese battledore, electric piano, wearing Yukata, Yukata dance</p> <p>【Craft】 Japanese traditional craft, round fan, painting on battledore, lucky charms</p> <p>【Performance】 Performance of traditional performing arts</p>	
		Sports	Judo, Kendo, Kyudo, long rope jumping, soccer
		Music	Orchestra, Chorus
	Food	Cooking of Japanese cuisines(Takoyaki, Okonomiyaki, Somen noodles etc.), school lunch, experiencing the cleaning routine after lunch	
	Outside school	Sightseeing, stroll around the school, Visiting special support education schools, interact with students from neighboring elementary school	
	Club activities	<p>【Sports】 badminton, table tennis, volleyball, basketball, Kendo, Karate</p> <p>【Culture】 Calligraphy, tea ceremony</p>	
		Others	Homestay in students' home



# Homestay experience overview

- The goal is that both the students and the host family can have a great time together.
- You will experience the daily lives of Japanese people starting from food preparation to preparing futon(mattress) as much as possible.
- You should act actively to be involved in each activity, that would nourish the mind of independence.
- We will host one school a day at maximum to maintain the quality of the experience.

## Feature of the Chichibu homestay experience

1. Workshops with rich nature and culture
  - We provide workshops which make the best use of the rich nature, history and culture
2. Experiencing the live of countryside in Japan as part of a local family
  - You can experience the daily lives of Japanese countryside at host family's house
3. Create a bond and a trust
  - You will build a relationship of trust through communications and workshops with the host family
4. Workshops with the care for safety
  - With the backup of the local government, we will give special care for the health and the safety of the students.

# Homestay experience -The flow

## Day 1

12:00

### Welcome to Chichibu!

Please enjoy the rich nature and warm people of Chichibu



13:30

16:30

### Experience Program

Experience the program that you chose in advance



16:30

### Welcome ceremony

You will meet your host here for the first time.



17:30

### Homestay experience

You will be a part of the family and prepare the food and prepare futon beds together



## Day 2

8:30

11:30

### Food experience

You will cook and eat together. Some of the food is local dishes you cannot see elsewhere.



12:00

### Leaving the village

You will leave the village with the ceremony. Say goodbye to your hosts.



Our family and our dog will welcome you warmly and we will try our best that you can make a good memory with us.



Our home is on top of a hill with a nice view of Chichibu basin. Please enjoy the life of countryside in Chichibu. We will all welcome you as a family.



# Homestay experience



Let us introduce one of the important elements of educational trip, homestay. Chichibu area has homestay accommodations in Saitama prefecture and have an experience of hosting 60 people by homestay.

In Chichibu, three to four students will stay at a local home and be part of the family, enjoying cooking and walking around the neighborhood.

Unlike the stay in a hotel room, the students can learn the everyday life of Japanese people by doing the house chores like preparing the futon(blanket) mattress, etc.

# Homestay experience -A look at a home





# Homestay experience -A look at a home



## Accommodations by area

# In Saitama -North area, hotel examples



Hotel Heritage Shiki-no-yu



Kamiizumi Fuyuzakura



# The list of accommodation for educational trip group

## -Hotel examples in the north area

Facility name	Address	Rooms	Capacity (ppl)	Phone number
<b>Hotel Heritage Shikino-yu</b>	228 Oegawa, Kumagaya-shi	250	600	+81-48-536-1212
<b>Kamiizumi Fuyuzakura-no-yado</b>	1431-1, Yanoh Mikawa-machi Kodama-gun	13	60	+81-274-52-2100
<b>Saitama Grand Hotel Honjo</b>	2-2-1 Ekinan, Honjo-shi	97	131	+81-495-21-2111
<b>Saitama Grand Hotel Fukaya</b>	1-1-13 Nishijima- cho, Fukaya-city	58	80	+81-48-571-2111
<b>Marroad-inn Kumagaya</b>	1-64, Ginza, Kumagaya-city	161	197	+81-48-525-7611

# In Saitama - Central and East area, hotel examples



Urawa Royal Pines Hotel

# The list of accommodation for educational trip group

## -Hotel examples in the central and the east area

Facility name	Address	Rooms	Capacity (ppl)	Phone number
<b>Urawa Royal Pines hotel</b>	2-5-1 Naka-cho, Urawa-ku, Saitama-shi	196	332	+81-48-827-1111
<b>Marroad Inn Omiya</b>	2-173 Sakuragi-cho, Saitama-shi	251	306	+81-48-645-5111
<b>Palace Hotel Omiya</b>	1-7-5 Sakuragi-cho, Omiya-ku, Saitama-shi	204	321	+81-48-647-3300
<b>Hotel Brillante Musashino</b>	Hotel Brillante Musashino	60	100	+81-48-601-5555
<b>Rafre Saitama</b>	3-2 Shintoshin, Chuo-ku, Saitama-shi	186	261	+81-48-601-1111
<b>Urawa Washington Hotel</b>	2-1-19 Takasago, Urawa-ku, Saitama-shi	140	234	+81-48-825-4001

# Accommodations in Saitama

## -hotel examples in the west area



New Sunpia Saitama Ogose



National Women's Education Center



# The list of accommodation for educational trip group

## -Hotel examples in the west area

Facility name	Address	Rooms	Capacity (ppl)	Phone number
<b>New Sunpia Saitama Ogose</b>	700 Furuike, Ogose-machi Iruma-gun	51	200	+81-49-292-6111
<b>National Women's Education Center</b>	728 Sugaya, Ranzanmachi, Hiki-gun	158	350	+81-493-62-6723
<b>Marroad Inn Hannō</b>	105-8 Namiyanagi, Hanno-shi	148	170	+81-42-974-4000
<b>Naguri Onsen Taishokaku</b>	917 Shimonaguri, Hanno-shi	19	100	+81-42-979-0505
<b>Kawagoe Prince Hotel</b>	1-22 Shintomi-cho, Kawagoe-shi	110	230	+81-49-227-1111



# Accommodations in Saitama

## -Hotel examples in Chichibu area



Ikoinomura Heritage Minoyama



Guest house  
Shizengo Higashizawa



# Accommodations in Saitama

## -Hotel examples in Chichibu area



Miyamoto-no-yu



Miyamotoke



Hotel Union Vert



# The list of accommodation for educational trip group

## -Hotel examples in Chichibu area

Facility name	Address	Rooms	Capacity(ppl)	Phone number
<b>Ikoinomura Heritage Minoyama</b>	3415 Minano Minanomachi, Chichibu-gun	30	147	+81-494-62-4355
<b>Guest house Shizengo Higashizawa</b>	1317-1 Ashigakubo Yokozemachi Chichibu-gun	9	summer: 20-25 winter: 30-35	+81-494-24-0800
<b>Hana-no-Omotenashi Nagaikikan</b>	449 Nagatoro Nagatoro-cho, Chichibu-gun	22	124	+81-494-26-5058
<b>Wado Yunoyado</b>	822-1 Kuroya, Chichibu-shi	38	200	+81-494-23-3611
<b>Ojikaso Akaya Onsen</b>	243 Sanyama, Oganomachi, Chichibu-gun	18	80	+81-494-75-0210
<b>Public Hotel Ryokami-so with hot spa</b>	707 Ryokamikomori Oganomachi, Chichibu-gun	36	142	+81-494-79-1221

# The list of accommodation for educational trip group

## -Hotel examples in Chichibu area

Facility name	Address	Rooms	Capacity (ppl)	Phone number
Miyamotoke, Natural park of west Chichibu	510 Nagaru Oganomachi, Chichibugun	6	50	+81-494-75-4060
Nishiyatsu Onsen Miyamotonoyu	495-1 Nagaru Oganochi, Chichibugun	19	120	+81-494-75-2272
Hotel Union Vert	8371-3 Shimoyoshida, Chichibu-shi	45	108	+81-494-77-1110
Hotel Miyama	1294 Yamada, Chichibu-shi	43	230	+81-494-24-6311
Natural Farm City Noen Hotel	5911 - 1 Omiya, Chichibu-shi	72	332	+81-494-22-2000
Mitsumine Shrine Kounkaku	298-1 Mitsumine, Chichibu-shi	50	150	+81-494-55-0241

# Factory Tour

# List of factory tours -Technologies

Company name	Area	Product	Tour content	Duration
East Japan Railway Company Co., Ltd. Omiya Car Center	Saitama city(central)	Train carriage maintenance	<ul style="list-style-type: none"> <li>· Disassembly of the wheels and the carriage, repair and assembly</li> <li>· Watch the test drive</li> </ul>	90mins
Tamron Co., Ltd. head factory	Saitama city(central)	Optical instruments and parts	<ul style="list-style-type: none"> <li>· Overview</li> <li>· Production of metal fixtures</li> </ul>	contact
Dainan Optical Co., Ltd.	Kawagoe city(west)	Optical glass (processing molding)	<ul style="list-style-type: none"> <li>· Production line tour</li> </ul>	60mins
MIKAMI Co.,Ltd.	Kawagoe city(west)	parts processing	<ul style="list-style-type: none"> <li>· Factory tour</li> <li>· Company briefing</li> </ul>	30mins
Iwasaki Eletrics Co.,Ltd. Saitama factory	Gyoda city(east)	LED, HID lamp and other light products	<ul style="list-style-type: none"> <li>· Watch introduction DVD</li> <li>· Production line of HID lamp</li> </ul>	30mins
Akebono Brake Industry Co.,Ltd.	Hanyu city(east)	brakes	<ul style="list-style-type: none"> <li>· Introduction of the museum of the brakes</li> </ul>	40mins
TAC Tajima Co., Ltd.	Hanyu city(east)	Aluminium products	<ul style="list-style-type: none"> <li>· Overview of the factory</li> <li>· Production line tour</li> </ul>	60mins
Chichibu Iwasaki Co.,Ltd.	Nagatoro(Chic hibu)	Halogen and LED lamp	<ul style="list-style-type: none"> <li>· Production line tour</li> </ul>	60mins

# List of factory tours -Food

Company name	Area	Product	Tour content	Duration
Glicopia East	( Central ) Kitamoto city	Sweets (POCKY · PRETZ etc.)	· Factory tour · Experience of making POCKY (fee required)	70mins
Toyo rice Co., Ltd. Saitama factory	( West ) Sakado city	No-wash rice	· Watch DVD · Production line tour	90-120mins
Yugeta Soysauce Co., Ltd. Ayano-kuni "Shoyuh" kingdom	( West ) Hidaka city	Soy sauce, Chichibu miso	· Production line tour · Experience of filtering Soy sauce(if needed)	30mins
Seibu Milk Co., Ltd.	( West ) Hidaka city	Dairy products	· Tour of the production process () (Commentary on production experience)	60 to 80mins
Yamaki Brewery Co., Ltd.	( North ) Kamikawa-machi	Miso, Soy sauce, Tofu, Pickles, Dessert	· Tour of brewing and bottling process · Making of Tofu (fee required)	30mins each
Musashino Aromatic Chemical Co., Ltd. Chichibu factory	( Chichibu ) Chichibu city	Food flavor	· Production line tour	60mins
Agriculture Center Co., Ltd	( Chichibu ) Oganomachi	Enomi, Maitake, Shiitake, Mashroom	· Production line tour of mashrooms	60mins

# List of factory tours -Cosmetics and Traditional crafts

Company name	Area	Product	Tour content	Duration
Takada Pharmaceutical Co., Ltd. Omiya factory	( Central ) Saitama city	External medicines	Production line tour	60-90mins
Takada Pharmaceutical Co., Ltd. North Saitama factory	( Central ) Kazo city	Injections	Production line tour	60-90mins
Takada Pharmaceutical Co., Ltd. Satte factory	( East ) Satte city	Oral medication	Production line tour	60-90mins
Henmi Orimono(weaving)	( Chichibu ) Chichibu city	Chichibu Meisen ( Silk fabric )	Production line tour	30-60mins



## Recommended route in Kanto area

# Recommended route -Including Nagano, spring & autumn ver.

	Itinerary
Day 1	Arrival in the afternoon (Narita/Haneda airport) > Stay in Narita or Tokyo Depending on the arrival time, move to Nagano
Day2	Hotel in Narita or Tokyo(10:00) > (View of mt. Fuji) > Kawagoe(11:00) > Lunch, school cultural exchange in Nagano(13:30) > Suwa Glass Town(16:00) > Stay in Tateshina Hot spring or Kamisuwa Hot spring
Day 3	Hotel >Suwa Shrine(fall hall) > Gizodo(experience the making of clocks) > Experience of making soba noodles(lunch) > Matsumoto castle > Stay in a farmer's guest house (Takeshi, Aokimura, Tateshina etc.)
Day 4	Farmer's house >>Karuizawa (former Karuizawa, Outlet Mall ect.) > Move to Saitama > School cultural exchange (13:30) > Dinner and stay at Miyamoto no Yu(16:30)
Day 5	Miyamoto no Yu(9:00) > Chichibu Meisen Kan(experience of making Meisen, 11:30) > Chichibu Local Products Center(Lunch, 12:00) > Nagatoro Rafting, walking of Nagatoro valley(14:30) > Stay in Chichibu(15:30)
Day 6	Chichibu homestay (9:00) > Tokyo sightseeing (Odaiba, Asakusa, 13:00) > Narita/Haneda airport (departure in the afternoon)

# Recommended route -Including Nagano, winter ver.

	Itinerary
Day 1	Narita/Haneda Airport(Departure in the afternoon) > Metropolitan Expressway, East Kanto Motorway>Stay in Narita or Tokyo
Day2	Hotel(10:00) > Kawagoe(11:00) > Lunch, School cultural exchange(13:30, class and group activities etc.) > Nagano Skiing accomodation facility
Day 3	Hotel(9:00) > Skiing, lunch(14:00) > Matsumoto Castle > Farmer' s guest house(Takeshi, Aokimura, Tateshina etc.)
Day 4	Farmer' s house >Karuizawa (former Karuizawa, Outlet Mall ect.) > Move to Saitama > School cultural exchange (13:30) > Dinner and stay at Miyamoto no Yu(17:45)
Day 5	<b>【Watching Icicles】</b> Miyamoto no Yu > Isicles of Ashigakubo(11:30) > Chichibu Local Products Center(Lunch, 12:30) > Chichibu Meisen Kan(14:00) > Stay in Chichibu area(homestay, 18:00)
Day 6	Chichibu homestay (9:00) > Tokyo sightseeing (Odaiba, Asakusa, 13:00) > Narita/Haneda airport (departure in the afternoon)

# Recommended route -Including Gunma, spring & autumn ver.

	Itinerary
Day 1	Narita/Haneda Airport(Departure in the afternoon) > Metropolitan Expressway/Kanetsu/North Kanto Motorway/ or Tokaido Shinkansen > Stay in Kiryu
Day2	Kiryu 1. Walking around Kiryu(Kiryu shrine, Cafe, Goto weaving, Izumi weaving) <b>【Wearing Kimono experience】</b> 2. Orihime Club(Kiryu is known for weaving, as famous as Nishijin in Kyoto) > Lunch, school cultural exchange > Stay at Oigami Hot spring (known for beautiful valley and the hot springs that makes your skin beautiful)
Day 3	Oigami Hot spring > Fukiware fall > Miroku temple > Lunch at agricultural processing factory > Gathering at Agricultural environment improvement center > Stay at Minakamicho Framer's guesthouse
Day 4	Minakamimachi(9:30) > School cultural exchange at Honjo city in Saitama(12:00) > Lunch at Hanazono Forest(14:00) > Yamaki Soy sauce brewery(Experience of making tofu and factory tour)s > Chichibu hometown village(16:00) > Fruits picking(16:15) > Oganochi, Chichibu hometown village(17:45) > Dinner and stay in Miyamoto-no-yu(Ryokan with hot springs)
Day 5	Oganomachi > Kawagoe (10:00, nostalgic town scenery, sweets street, Kawagoe Hikawa shrine) > Lunch at Koedo Kurasato(14:10) >Saitama Railway museum(15:00, learn about history and technology of railways in Japan) >Dinner and stay at Urawa Royal Pines Hotel(18:00)
Day 6	One day sightseeing of Tokyo(Odaiba, Asakusa) >Departure from Haneda/Narita Airport in the afternoon

# Recommended route -Including Gunma, winter ver.

	Itinerary
Day 1	Narita/Haneda Airport(Departure in the afternoon) > Metropolitan Expressway/Kanetsu/North Kanto Motorway/ or Tokaido Shinkansen > Stay in Kiryu
Day 2	Kiryu *Choose the option one or two* 1. Walking around Kiryu(Kiryu shrine, Cafe, Goto weaving, Izumi weaving) 2. Orihime Club > Lunch, school cultural exchange > Stay at Minakami Hot spring
Day 3	Minakami Hot spring > Lunch at Minakami Ski Resort -Minakami Kogen Ski Resort (early December to early April) -Sand bird Ski Resort (Mid-December to early April) -Akazawa Ski resort (January to early March) > Gathering at Agricultural environment improvement center > Stay at Minakami farmer's guest house
Day 4	Minakamimachi(9:30) > School cultural exchange at Honjo city, Saitama(10:45-11:30) > Lunch at Hanazono Forest(12:30) > Yamaki Soy Sauce Brewery(16:15 Tofu making and factory tour) > Fruit picking (17:45) > Oganomachi Chichibu Hometown Village > Dinner and stay at Miyamoto-no-yu(Japanese style hotel with hot spring)
Day 5	Oganomachi(8:30) > Onouchi Valley -watch isicles(9:00-9:30) > School cultural exchange(13:00) > Kawagoe city(14:30) > Nostalgic city scenery of warehouses, clock tower, sweet streets(15:30) > Saitama Railway Museum(16:15-18:00) > Dinner and stay at Urawa Royal Pines Hotel
Day 6	One day sightseeing of Tokyo(Odaiba, Asakusa) >Departure from Haneda/Narita Airport in the afternoon

# Recommended route -Including Chiba, spring & autumn ver.

	Itinerary
Day 1	<p>Narita airport(Arrival in the afternoon)</p> <ul style="list-style-type: none"> <li>&gt; Narita Shinsho-ji temple, visit for the main prayer hall</li> <li>&gt; Stay at a hotel in Narita city</li> </ul>
Day2	<p>Hotel (10:00)</p> <ul style="list-style-type: none"> <li>&gt; School cultural exchange in Chiba city(Lunch)</li> <li>&gt; Stay in a guesthouse(16:00, possible an experience of making mochi; rice cake)</li> </ul>
Day 3	<p>Guesthouse(9:00)</p> <ul style="list-style-type: none"> <li>&gt; Boso Nomura(9:30-11:30, Tea Ceremony experience)</li> <li>&gt; Sahara(12:15-13:10, Lunch)</li> <li>&gt; Sightseeing of Sahara, the riverside district(13:20-15:00)</li> <li>&gt; Katori shrine(15:10-16:00)</li> <li>&gt; Stay in a hotel in Narita city(17:00)</li> </ul>
Day 4	<ul style="list-style-type: none"> <li>&gt; Narita Airport(9:00)</li> <li>&gt; Saitama Prefecture via East Kanto Motorway</li> <li>&gt; Saitama Prefectural Museum of History and Folklore(10:00, Making of Magatama)</li> <li>&gt; Lunch at Little Koedo Kurari(11:30-12:00)</li> <li>&gt; Walking around Kawagoe(14:00)</li> <li>&gt; (1)Oganomachi Chichibu Hometown Village(16:15)</li> <li>&gt; (2)Homestay in Chichibu</li> </ul>
Day 5	<p>Chichibu area(10:00)</p> <ul style="list-style-type: none"> <li>&gt; Chichibu Meisen Kan(10:00-11:30, Meisen making experience)</li> <li>&gt; Chichibu Local Products Center(Lunch)</li> <li>&gt; School cultural exchange(13:30)</li> <li>&gt; Stay in Urawa Royal Pines Hotel(16:30)</li> </ul>
Day 6	<ul style="list-style-type: none"> <li>&gt; The Railway Museum(9:00, Train cars, diorama, experience train simulator, etc.)</li> <li>&gt; Tokyo sightseeing(13:00, Odaiba, Asakusa)</li> <li>&gt; Departure from Haneda/Narita Airport in the afternoon</li> </ul>

# Recommended route -Including Chiba, winter ver.

	Itinerary
Day 1	<p>Narita airport(Arrival in the afternoon)</p> <ul style="list-style-type: none"> <li>&gt; Narita Shinsho-ji temple, visit for the main prayer hall</li> <li>&gt; Stay at a hotel in Narita city</li> </ul>
Day2	<p>Narita(8:00)</p> <ul style="list-style-type: none"> <li>&gt; Kujukuri</li> <li>&gt; Dinner at Kamogawa Sea World(10:00-13:20)</li> <li>&gt; Kamogawa Jinzoji-temple(13:30-15:00, Yukata and Tea Ceremony experience)</li> <li>&gt; Oyama Senmaida:Tanada; terraced rice paddy field(15:30-16:30) (Daifuku-Mochi making or paper-making experience)</li> <li>&gt; Stay in Oyama Senmaida(farmer's house experience)</li> </ul>
Day 3	<p>Oyama Senmaida(9:00)</p> <ul style="list-style-type: none"> <li>&gt; One day school cultural experience and lunch(10:00-16:00)</li> <li>&gt; Stay in Shirahama Onsen(16:00)</li> </ul>
Day 4	<p>Shirahama(8:30)</p> <ul style="list-style-type: none"> <li>&gt; Tomiura Interchange, Tateyama motorway</li> <li>&gt; Kisarazu Junction(10:00)</li> <li>&gt; Aqualine</li> <li>&gt; Lunch and walking in Kawagoe(12:30-14:15)</li> <li>&gt; (1)Oganocho Chichibu Hometown Village(16:15) &gt;Dinner and stay at Miyamoto-no-yu</li> <li>&gt; (2)Homestay in Chichibu</li> </ul>
Day 5	<p>Chichibu area(9:00)</p> <ul style="list-style-type: none"> <li>&gt; Ashigakubo Icicles(9:30)</li> <li>&gt; Lunch at Chichibu Local Product Center(11:30)</li> <li>&gt; School cultural exchange(14:30-16:00)</li> <li>&gt; Stay in Urawa Royal Pines Hotel(18:00)</li> </ul>
Day 6	<ul style="list-style-type: none"> <li>&gt; The Railway Museum(9:00, Train cars, diorama, experience train simulator, etc.)</li> <li>&gt; Tokyo sightseeing(13:00, Odaiba, Asakusa)</li> <li>&gt; Departure from Haneda/Narita Airport in the afternoon</li> </ul>

# Contact information

Department of sightseeing, Saitama Prefecture

Mail : a3950-10@pref.saitama.lg.jp

Web : <http://www.sainokuni-kanko.jp/eng/>